

# Sketch, paint, and block print Landscape

## Four-day course

You are here for four full days of art and creativity spread over a proper five-day holiday. There is a glorious day in the countryside painting the beautiful Sussex landscapes near the studio. The next day is a full day learning how to make a block print, Day three and four you have fun putting the two together giving you amazing results. This is a course suitable for beginners and experienced artists alike you will be guided and helped whether you can paint or not. We provide all the basic materials that you need if you wish to buy more, we have a small shop and of course you are welcome to bring your own sketch book, watercolours, or acrylics if you have them.



This timetable is a guide to how you will spend your creative break. Times are flexible and we will adapt to your needs as far as possible.

### Day 1.

- 1 - 2pm Check in
- 2 - 3.30pm Meet in the studio; Introduction to Black Shed Studios and overview of course. This course is in two sections, the first landscape painting using water-based mediums and the second Block printing using soft lino blocks.
- 3.30pm Tea in the studio or in the garden; we like to have a 'bit of cake' too
- 4 - 5pm We take a walk! We won't go far because right on our doorstep is the Ashdown Forest. While we walk, we will decide where we would like to sketch and paint tomorrow.
- 7pm Dinner. Dinner is taken in our dining room or outside, a relaxed occasion with good food, wine if you brought it, and conversation

### Day 2. Landscape painting

- 8.30 - 9.30am Breakfast taken in our dining room
- 9.30 - 12.30pm Gathering our sketch books, paints and pencils we head out to the site that we decided on yesterday. With Sandy's help you will make sketches, and paintings using the painting medium that interest you. We will be able to stay outside all day but if we need to, we can work in the studio as well. There are plenty of beautiful views from the studio and cabin windows.
- 12.30 - 2pm Lunch. If good weather a picnic
- 2pm - 3.30 Continue to paint outside return for tea
- 3.30 - 4pm Tea in the studio or in the garden
- 4 - 5pm This session is all about assessing what we have done, what we would like to do, perhaps Sandy will do some demonstrations all guided by you and your work. Sandy welcomes your questions and will help you with any difficulties you have encountered.
- 7pm Dinner



### Day 3. Block printing

8.30 - 9.30am Breakfast taken in our dining room

9.30 - 12.30pm Block printing will be explained with lots of examples. You will decide how you are going to use your paintings from yesterday and add block printed images. If you look at the example below, the trees are block printed but the background is watercolour painting. You will draw your design onto a soft lino block.

12.30 - 2pm Lunch A light lunch eaten either outside or in dining room

2pm – 3.30 You will learn how to use the block cutting tools and start to cut out your design

3.30 – 4pm Tea in the studio or in the garden

4 – 5pm Once you have cut your block you will take a proof print. Then using your pictures from yesterday you will paint some backgrounds ready to print on tomorrow.

7pm Dinner



### Day 4. Combining painting and printing

8.30 - 9.30am Breakfast taken in our dining room

9.30 - 12.30pm Now the fun bit! You print onto your painted backgrounds

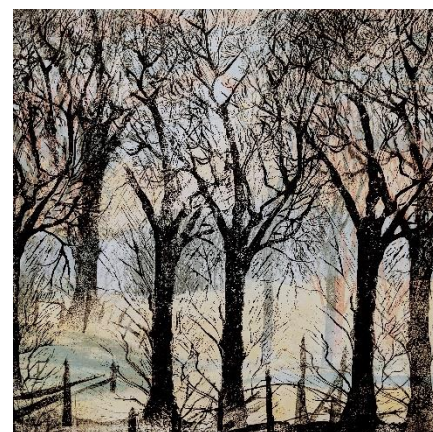
12.30 - 2pm Lunch. If good weather a pick nick

2pm – 3.30 More printing and perhaps more painting backgrounds.

3.30 – 4pm Tea in the studio or in the garden

4 – 5pm More printing and painting. While work is drying you are welcome to paint in the grounds of the studio, there is a pond, meadow, ornamental garden, and veggie patch,

7pm Dinner



### Day 5.

8.30 - 9.30am Breakfast

9.30 - 12.30pm Final printing session. Selecting the best backgrounds to print onto you will create wonderful pictures to take home with you.

12.30 - 2pm Lunch, finish any unfinished work and pack up

3pm Check out



Black Shed Studios, Sunnyview, Nursery Lane, Fairwarp, East Sussex TN22 3BD

Enquiries: sandyinfield@gmail.com