

# Black Shed Studios

## Landscape draw and paint

6 session course

This course is a painting festival! Whether you are a beginner or very experienced you will be able to learn, improve your techniques and revel in fresh air sunshine (hopefully) and the beautiful landscapes of Sussex.

You will be able to try watercolour, acrylic, ink and some of the media that go with them for example 'Acrylic Retarder or Ox gall solution. Techniques such as drybrush, paint washes or Impasto. Sandy Infield your teacher was trained in traditional painting at the Slade school and learned from masters like Patrick George and Paula Rego.

If you have your own paints and paper, you are welcome to bring them, if you have not, we provide all the basic materials and have a small shop if you find that you want more.



This timetable is a guide to how you will spend your creative break. Times are flexible and we will adapt to your needs as far as possible.

### Session One

Introduction to Black Shed Studios and overview of course. You will be shown the materials you might like to try and examples of the different painting media available for you to use. Sandy will demonstrate 'How to stretch paper' There will be plenty of time for questions

We take a walk! We won't go far because right on our doorstep is the Ashdown Forest. While we walk, we will stop to make quick sketches and gather ideas for future paintings.



### Session two

The start of this session is given over to demonstrations and help. If you are a complete beginner, you will be shown how to start more advances students will learn how to improve technique.

Taking sketch books, paints, and pencils we head out to the site that we decided on yesterday. With Sandy's help you will make sketches, and paintings using the painting medium that interest you. We will be able to stay outside all day but if we need to, we can work in the studio as well. There are plenty of beautiful views from the studio.

### Session 3

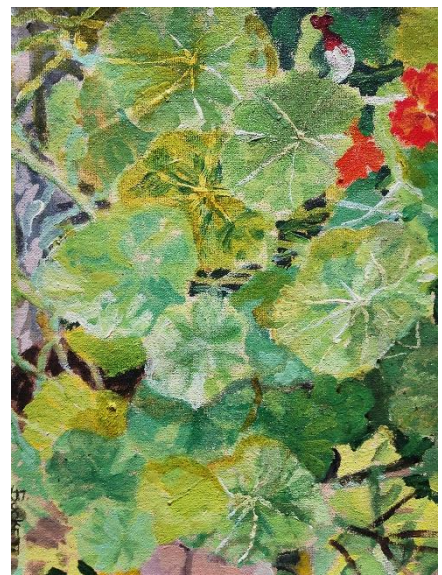
This session is all about assessing what we have done, what we would like to do, Sandy will do some demonstrations all guided by you and your work. Sandy welcomes your questions and will help you with any difficulties you have encountered.



### Session 4

We will choose another site near-by and head off to paint!

As with the last session there will time to assess our work or learn new materials & techniques. If you would rather paint there are many subjects in the studio grounds, ponds, meadow, woodland and of course the garden & veggie patch.



### Session 5 & 6

More painting! By now you will know what and where you would like to work this last two sessions will be held in the studio grounds. Sandy will be at hand to help if you need it.

There will be tips on mounting, framing, and exhibiting your work.

Black Shed Studios, Sunnyview, Nursery Lane, Fairwarp, East Sussex TN22 3BD

Enquiries: [sandyinfield@gmail.com](mailto:sandyinfield@gmail.com)